

An Upper Swabian success story



In 1970 Walter Knoll founded his one-man business in the Upper Swabian town of Bad Saulgau. In 2020 over 1,200 people all over the world work together towards the success of KNOLL Maschinenbau GmbH.

KNOLL50
It works together

From one-man business to global company

KNOLL's company history is also always family history. To this day the company is family-owned, now in the second generation. Independence that we intend to keep.

From a shoemaker's son to a successful entrepreneur. What sounds like the fulfilment of the American dream is a career made in Upper Swabia. Walter Knoll, who was born in 1928 in Völkofen, made it! In 1970 he founded his own mechanical engineering company in Bad Saulgau. In the beginning it was all about staying strong and keeping up, then solid development. In short, KNOLL Maschinenbau has grown over fifty years. The success of the company is also a success of the employees. Only with their performance, flexibility and commitment could the company take the leap from a small business to a sound medium-sized company and sustain its position on the global market.



The company founder
Walter Knoll (1928 – 2012).

Keeps growing and growing and growing ...

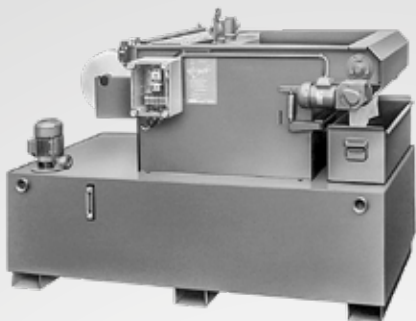


As Upper Swabians we are not prone to take flights of fancy, we prefer to be down-to-earth and have grown continuously. Since the first new construction in 1974, KNOLL has extended its production and administration area at the headquarters in Bad Saulgau around 50 times: from 900 m² to the current 57,000 m².

Milestones



The breakthrough came at the trade fair for metalworking machines (FAMETA).



New product: hydrostatic filter.



Manfred Knobelspies is Technical Director.



25-year company anniversary, 270 employees.



The company is growing and buys its own premises in Bad Saulgau.



Walter Knoll starts his own mechanical engineering company in a rented workshop.



The KNOLL staff and the administration building.



New product: KTS screw spindle pump.

3
NUMBER OF EMPLOYEES 1970

100
NUMBER OF EMPLOYEES 1985

200
NUMBER OF EMPLOYEES 1990

1970

1972

1974

1987

1988

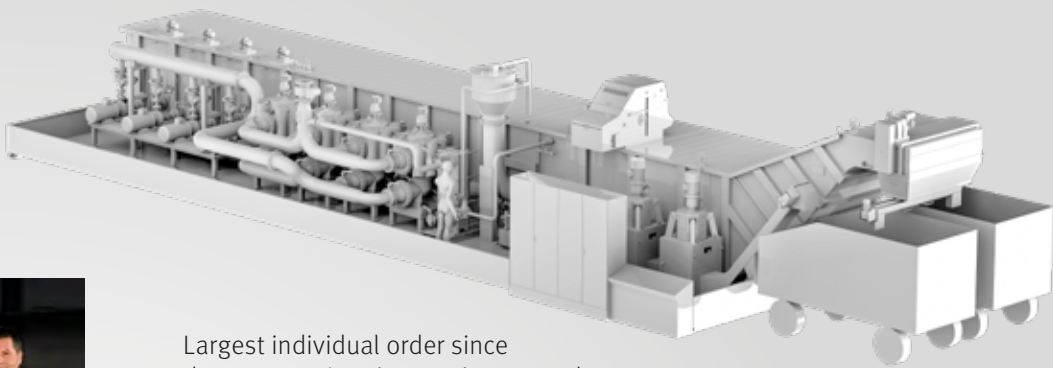
1989

1991

1995



Office extension.



Largest individual order since the company's existence is a central system.



Jürgen, Walter and Matthias Knoll jointly celebrate 180 years.



Opening of the new production site in Wroclaw/Poland.



KNOLL also gains a foothold in the American market.



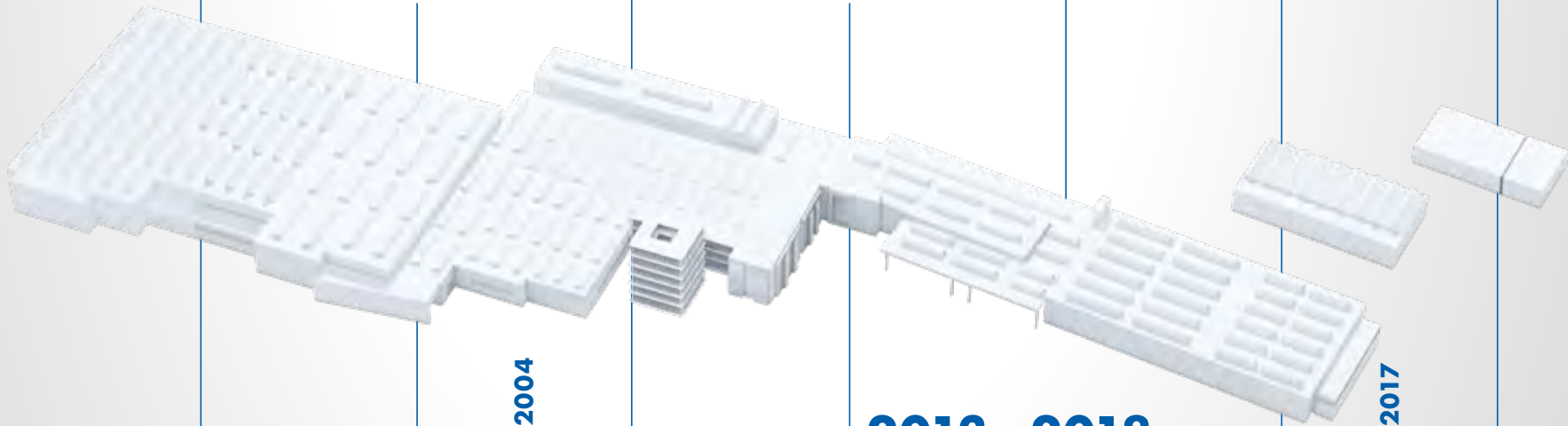
Walter Knoll receives honorary citizenship of the town of Bad Saulgau.



For the 40-year company anniversary KNOLL showcases its innovation at the trade fairs using a pop art motif.



Completion of the two new administration buildings K1 and K2.



NUMBER OF EMPLOYEES 2004
500

2013 – 2018

The company at the headquarters in Bad Saulgau after implementation of the master plan 2013 – 2018. Buildings, logistics, structures and processes are adapted to the increased requirements of our customers.

NUMBER OF EMPLOYEES 2017
1.000

1996

2000

2003

2008

2010

2011

2017

2020

Clean solutions for
the metalworking industry

TURNING

MILLING

GRINDING

Whether it is turning, milling, drilling or grinding. KNOLL provides solutions for all processes of machining. They convey, filter and pump chips and cooling lubricants.

DRILLING

Used in the manufacture of different products

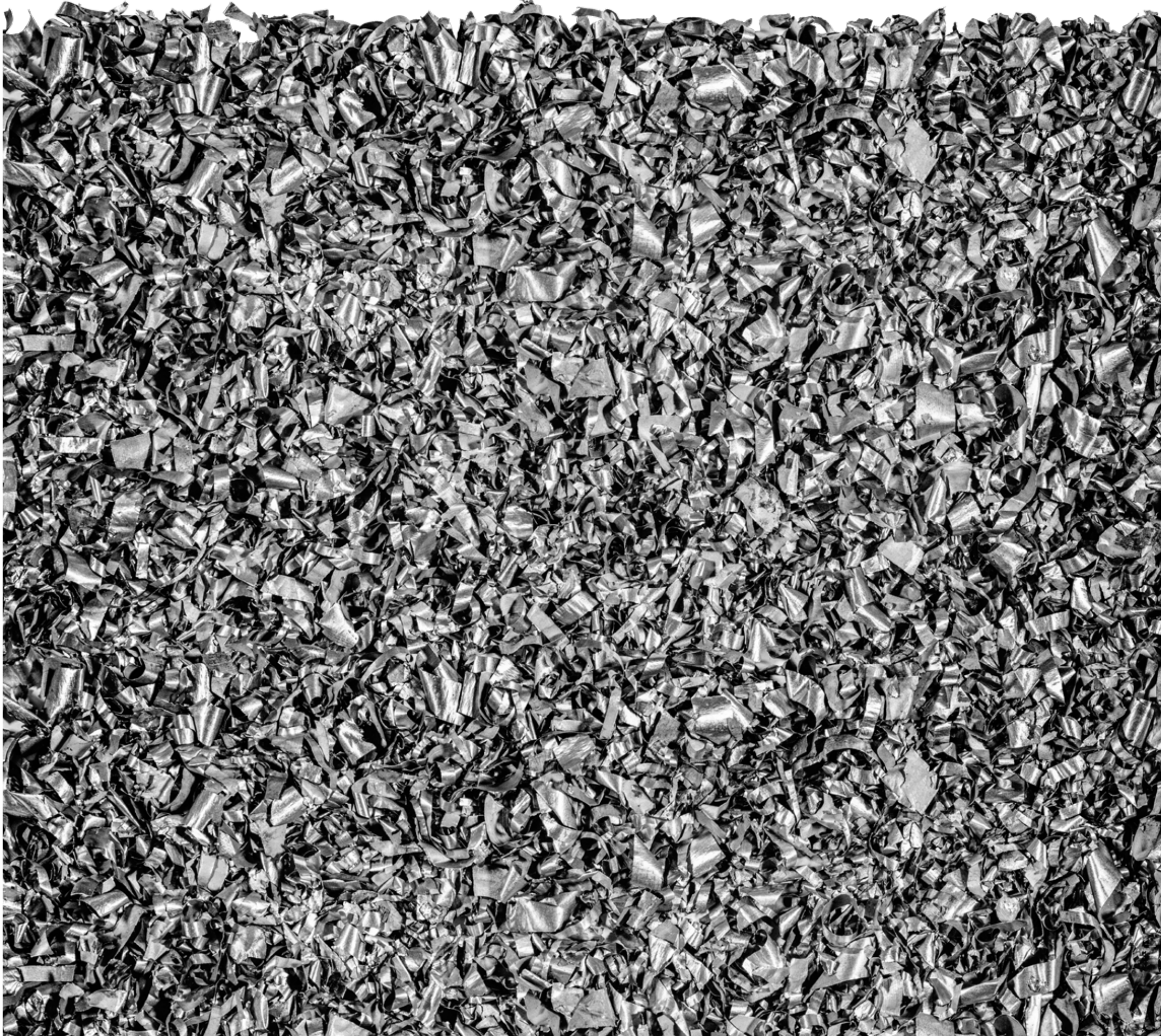


Our machines and systems support production processes in the following industries: mechanical engineering, automotive, aviation, watch-making, medical technology, electrical engineering, information technology, and lots more.



Business units

To this day the mechanical engineering company KNOLL is driven by offering customers added value. A product range has evolved which makes machine tools more powerful and production processes cleaner and more efficient.



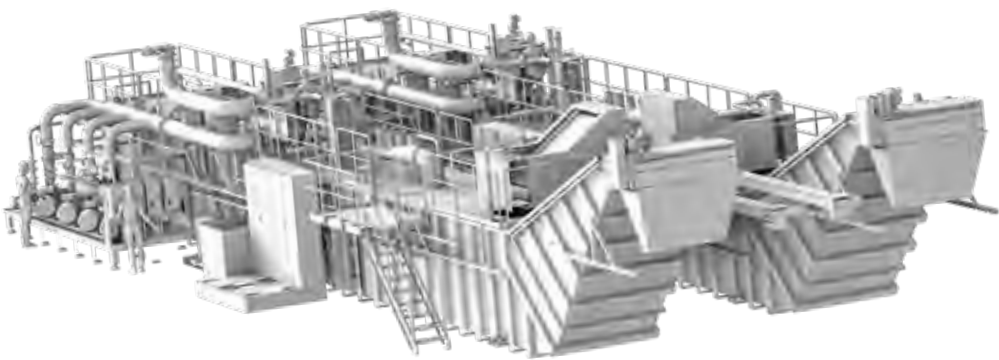
INDIVIDUAL MACHINES

The KNOLL individual machines are accessories for machine tools or components of central systems. They are used for separating, transporting and treating chips and cooling lubricants. They also supply the machine tools with clean cooling lubricant.



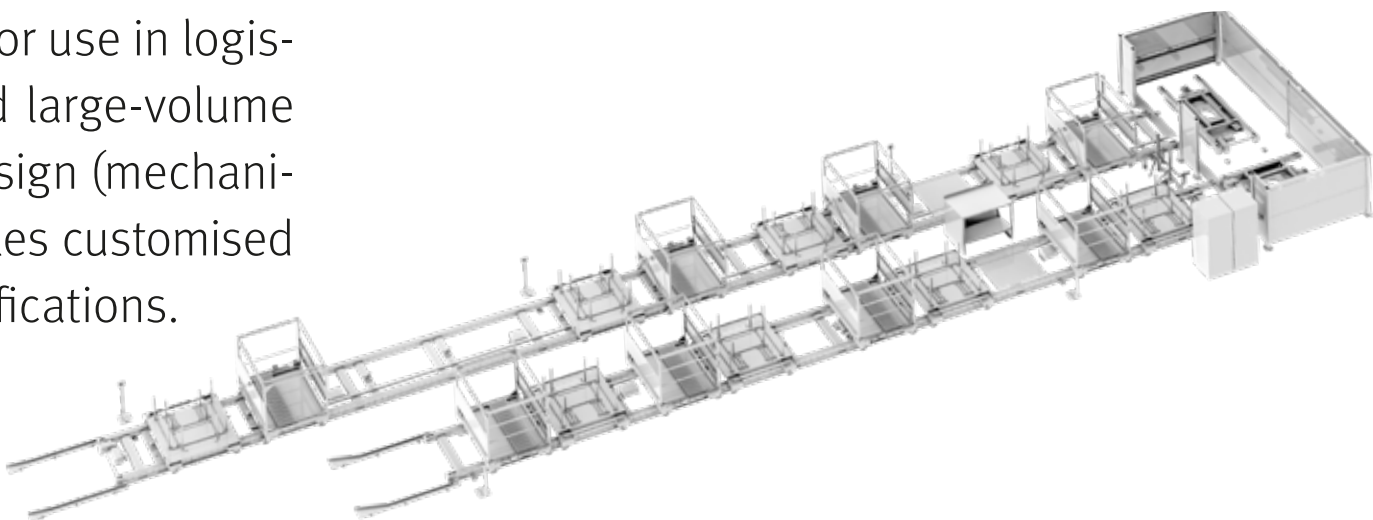
CENTRAL SYSTEMS

System solutions are required to convey chips and/or cooling lubricants fully automatically from the machines to a central point and treat them. Individual systems and components are linked to become a system.



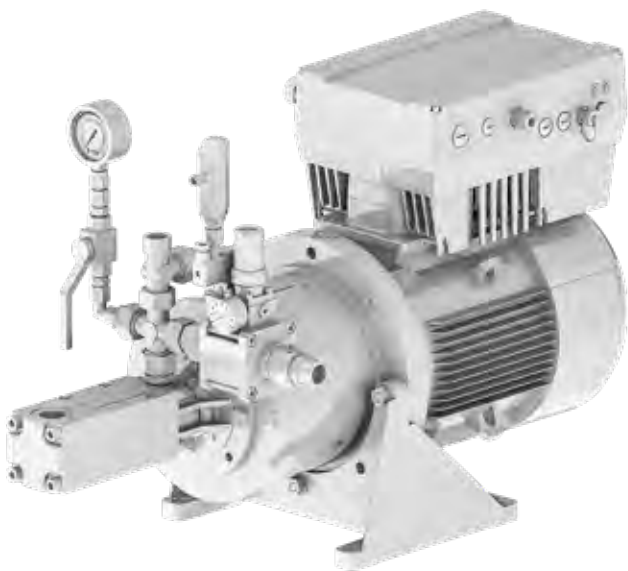
TRANSPORT SYSTEMS

KNOLL transport systems are perfect for use in logistics and assembly, also for heavy and large-volume parts. The systems have a modular design (mechanical, electrical and software). This enables customised solutions according to customer specifications.



PUMPING

KNOLL has been developing and producing pumps for auxiliary power requirements since the foundation of the company. Over the years innovative technology increased the acceptance of positive displacement pumps, in particular, among external customers. There are also suitable pumps from KNOLL for highly viscous, contaminated or non-lubricating media.



SERVICE

As KNOLL products are used all over the world, we also provide our service worldwide. We provide support promptly and deliver conclusive diagnoses. If necessary, we send service technicians at short notice. Our spare parts warehouse stocks the most common wear parts, consumables and spare parts. They can be retrieved at any time – for quick dispatch and assembly.



Success depends on
working together



The dynamic development of KNOLL is a joint effort. Everyone in the company contributes to the added value and a successful coexistence. Politeness, respect, fairness and equality are anchored in our corporate principles. KNOLL also demonstrates social responsibility outside the company. We are involved in the region in a number of ways. In addition, staff and management support aid projects around the world.



Company with momentum



KNOLL is a dynamic company. The continuous development requires a constant willingness from management to invest and a willingness from staff to change. We attach huge importance to education and training. What the company invests in the knowledge and skills of its employees today ensures future success. We also think sustainably when it comes to the environment: For the company's 50th anniversary, we want to make KNOLL CO₂-neutral.



There's no limit to quality



KNOLL Maschinenbau
Bad Saulgau/Germany



KNOLL America
Detroit/USA

KNOLL Italia
Bergamo/Italy



KNOLL Polska
Wrocław/Poland



KNOLL China
Shanghai/China

Around two thirds of our products are exported abroad directly or indirectly via customers. As a result, within the framework of our Follow-the-Customer strategy we are aiming to have our own subsidiaries in the key markets of America, Asia and Europe. KNOLL also operates a production plant for sheet metal structures in Wrocław, Poland.