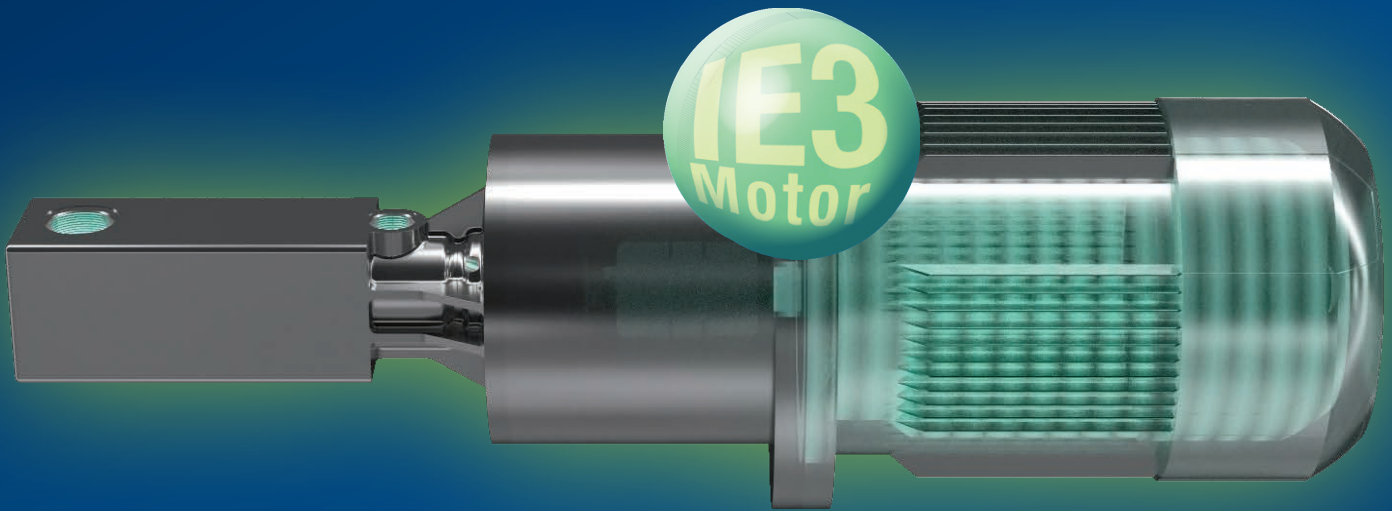


With KNOLL you save energy not only when switching the pump on, but already with the acquisition of the motors:



KTS screw pump with IE3 world motor

Starting on January 1, 2015, the next requirements phase for the efficiency of electric motors goes into force in Europe. The goal is to reduce energy consumption and CO₂ emissions (EU directive 640/2009 and annex 04/2014).

KNOLL Maschinenbau is setting a trend with the implementation of the eco design requirements. KTS high pressure pumps across the whole power spectrum will have world motors with the following equipment starting in 2015:

- IE3 Premium Efficiency
- NEMA Premium Efficient (UL/CSA models)
- China Energy Label
- Installed thermal protection (PTC thermistor temperature sensor)

available
from stock
up to 30 kW